



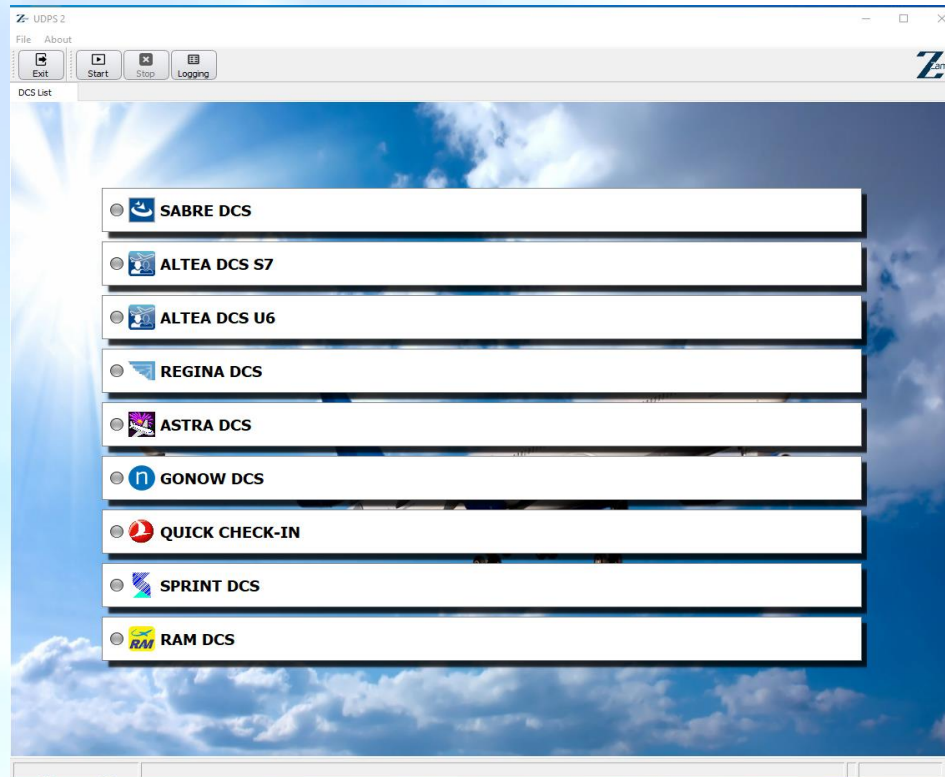
Universal Departure Platform Solution





UDPS

UDPS - A general access platform similar to CUTE (Common Use Terminal Equipment) system which allows you to create a Multi-DCS work environment and easily switch between DCS applications on a workstation with one set of peripheral equipment.





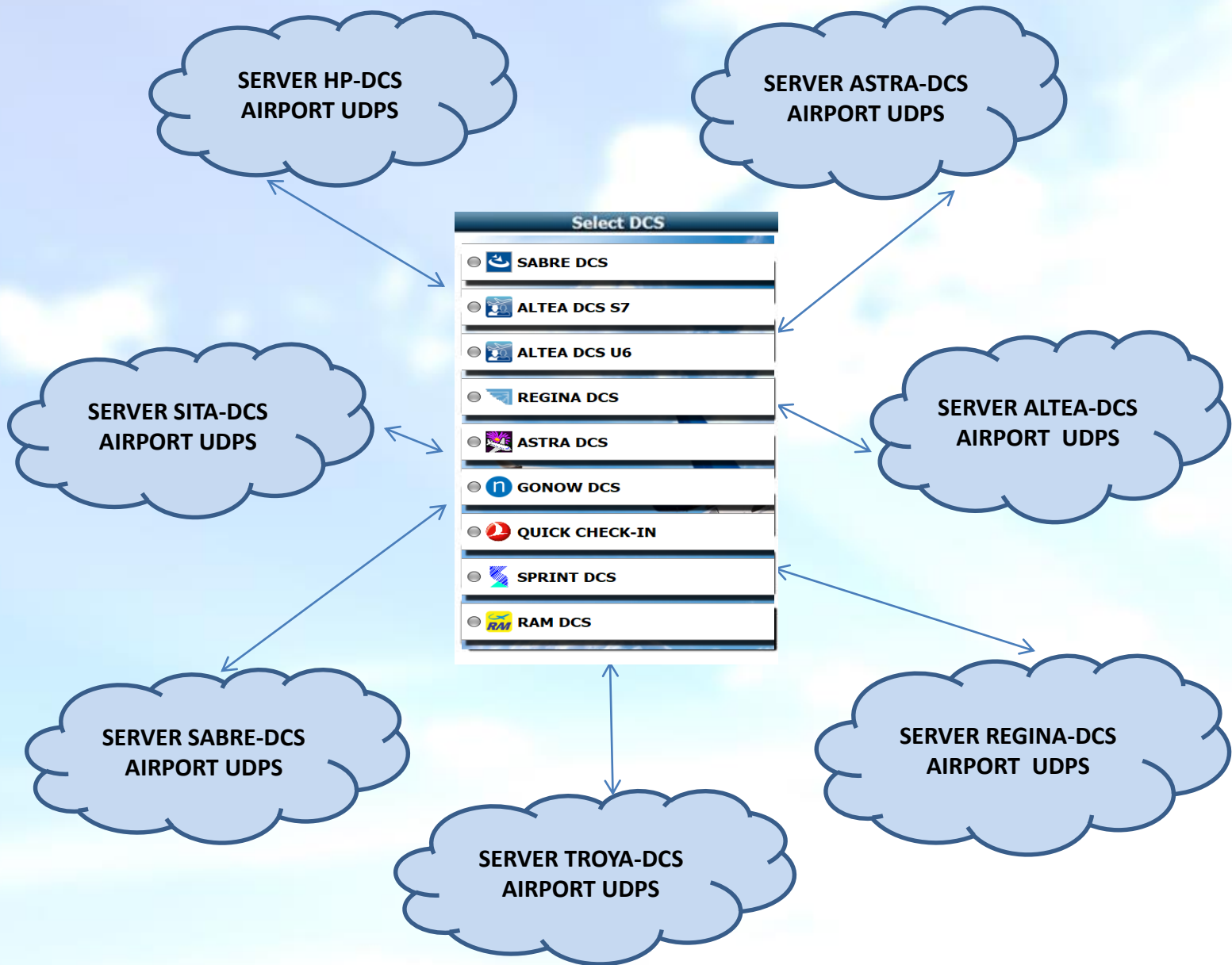
Versions and Requirements

Version:

- **UDPSv1**- a version of a system that does not require server infrastructure. Switching between DCS is only sequential. The solution is optimized for small airports;
- **UDPSv2**- version of a system using the Zamar HCP port virtualization module. A cloud or virtual server only for connection with the workstation, then the system works automatically, it launches several DCS at the same time. CUPPS supported. The solution is optimized for medium-sized airports;
- **UDPSv3**- version of a system using Microsoft Active Directory of the Zamar HCP port virtualization module. Virtual local server, DCS distributions are located in a repository with management and updating via AD, it is possible to run several DCS at the same time. CUPPS supported solution is optimized for large airports;

Requirements:

- Windows 10+
- The application requires administrative rights in the OS
- ATB/BTP & BGR maintain AEA standard of Firmware
- Minimum time spent on training and implementation of the solution
- Hybrid platform installed by either Native or CUPPS version of DCS.





Platform advantages

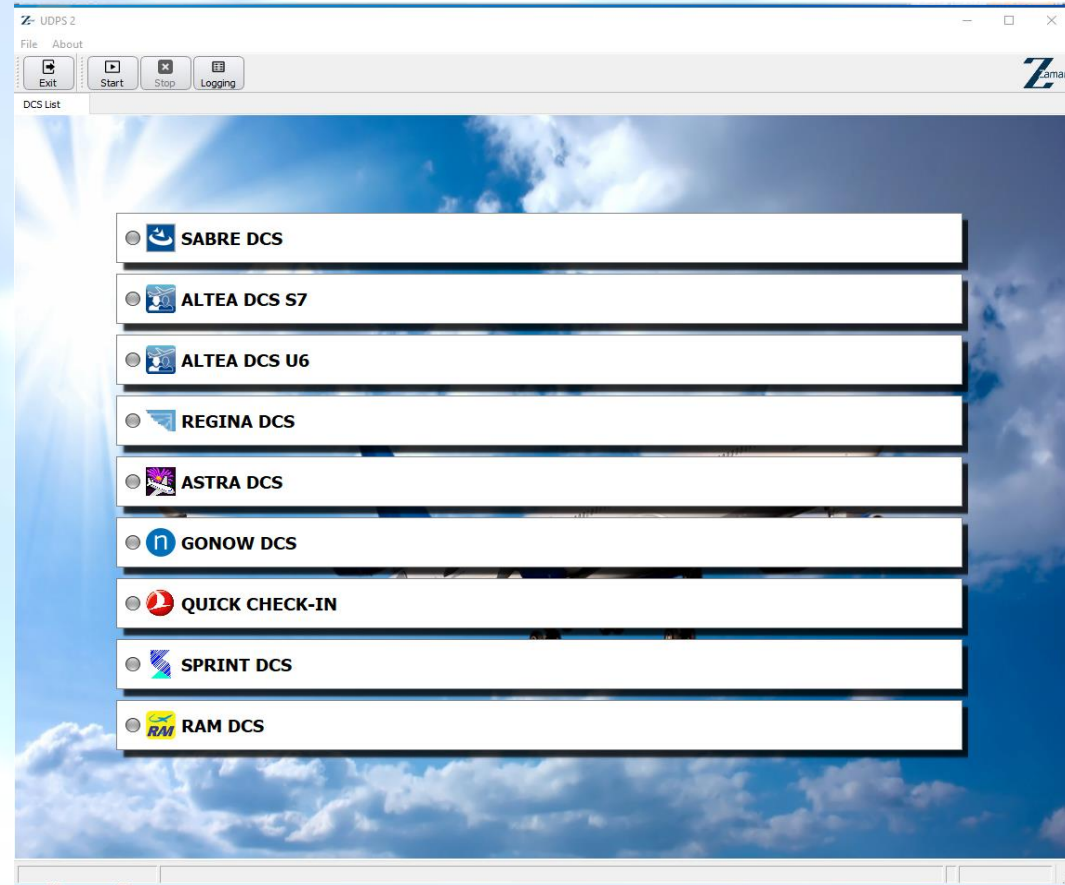
1. The platform is designed as an application to a PC and does not require a local server infrastructure. Cloud server contains only settings and users that do not affect performance of the platform at the airport in case of outage of the link with the server;
2. The platform maintains Native and CUPPS versions of DCS at the same time, which makes it more flexible in relation to the use of DCS carriers;
3. The platform does not "break" since in the architecture of our system each workstation is a separate cell, breakdown of one cell does not affect the work of the rest;
4. The platform allows you to use any third-party PC applications. For example, internal corporate chat, Microsoft office, etc.;
5. Certification of new DCSs on the platform is free and remote;
6. Multi-port, the HUB module allows you to monitor and manage Airport Terminals from a single center;
7. Easy to maintain. We train local staff and give full access to "support level 1 and 2", all minor problems are repaired literally in minutes without long waiting for help from a call center and opening a ticket / case / work order, etc. + remote technical support 24/7 in your native language;
8. Availability of different versions of the platform for "size" of the infrastructure and the needs of each specific airport;
9. The software is included in the Unified State Register of Russian Programs and is not subject to VAT;
10. Considerable flexibility in pricing;
11. We do not require replacement of equipment. If the airport has modern equipment already purchased we can deploy the system on the existing infrastructure;
12. Regular VPN connections are used between the airport router and airline servers, thus both the airport and airlines are exempt from the costs of AviNet or SitaHub;



ASTRA DCS system launch from the UDPS system

DCS can be launched in three ways:

- 1. Double click on DCS**
- 2. By selecting DCS from the list and clicking on the Run (Green) button on the toolbar**
- 3. Select DCS using the keyboard up and down keys and press ENTER.**





ASTRA DCS system launch from the UDPS system

DCS Астра
Сеанс Настройки Окно Справка

РУС



Вход в систему

Система / F2

Пульт:

Пользователь:

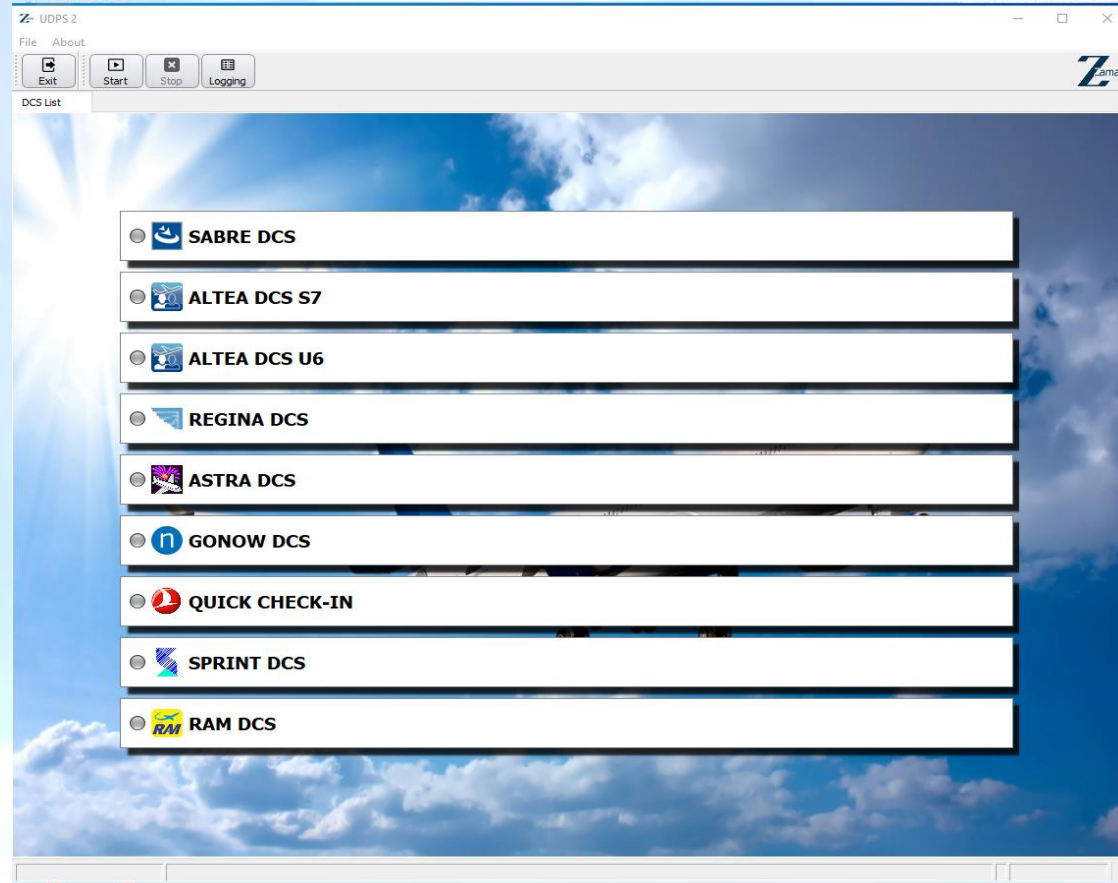
Пароль:



Запуск системы ALTEA DCS из системы UDPS

DCS can be launched in three ways:

- 1. Double click on DCS**
- 2. By selecting DCS from the list and clicking on the Run (Green) button on the toolbar**
- 3. Select DCS using the keyboard up and down keys and press ENTER..**





ALTEA DCS system launch from the UDPS system

Amadeus
**Altéa Departure Control
Customer Management**

Sign in

Connection: PRODUCTION Help [F1]

Identification

User ID: *

Password:

Organization: U6

Clear Advanced >> Sign in Exit

amADEUS
Your technology partner

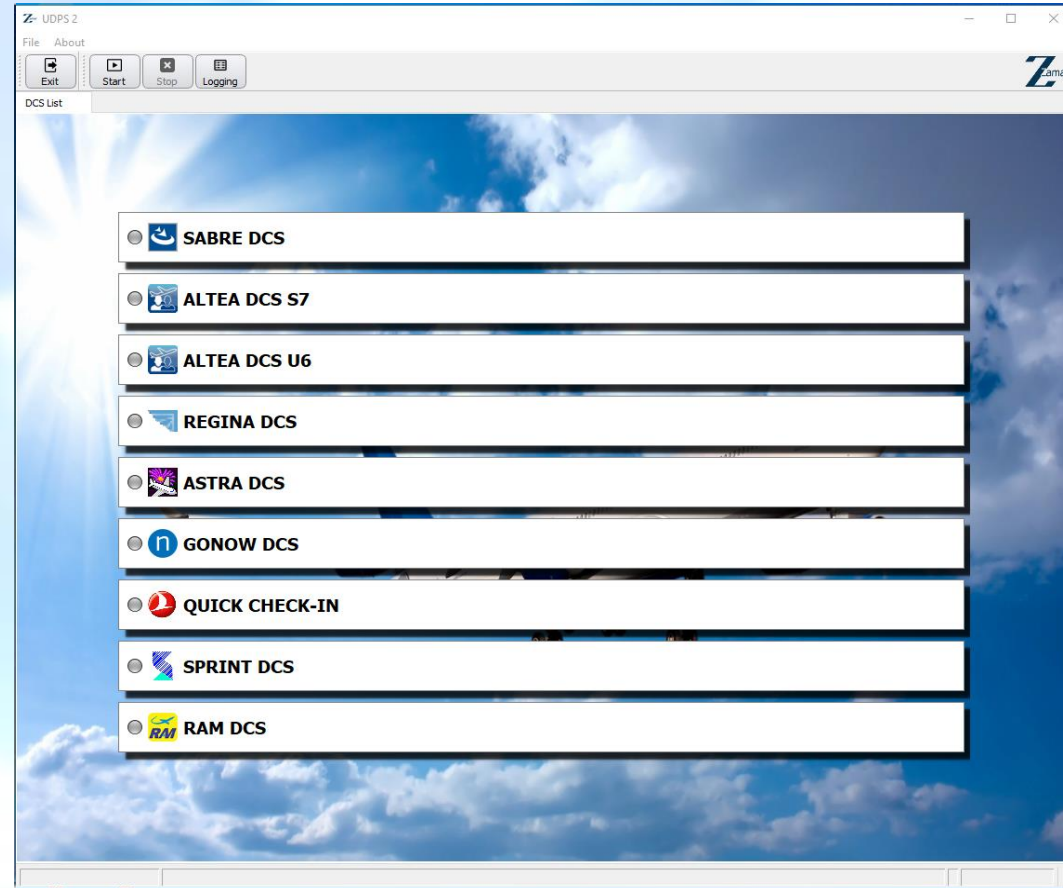
Copyright 2014 Amadeus s.a.s. All rights reserved.



SABRE DCS system launch from the UDPS system

DCS can be launched in three ways:

- 1. Double click on DCS**
- 2. By selecting DCS from the list and clicking on the Run (Green) button on the toolbar**
- 3. Select DCS using the keyboard up and down keys and press ENTER..**





SABRE DCS system launch from the UDPS system

Interact-v11.0-21Oct20

Sign In/ Out Encode/Decode TIMATIC Tools Help

F1
Flights

F2
Check-In

F3
Boarding

F4
Operations

F5
Seats

F6
Reservations

F7
Pricing


F8
Ticketing

Sabre



Sign In

▶ Sign In

Employee Number: * 

Password: *

Airline Code / Suffix:

Duty Code:

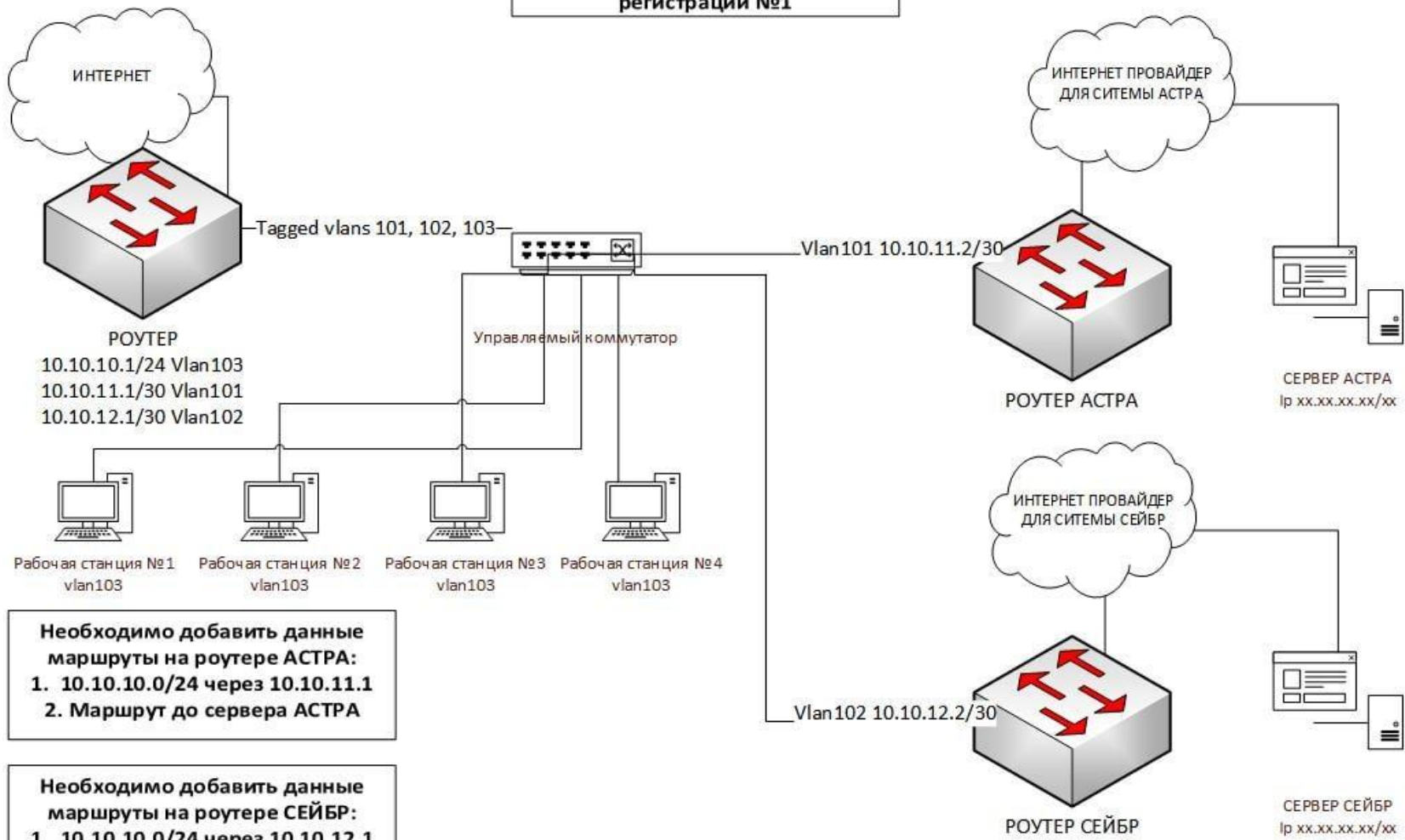
Designate Printers

OK Cancel



Network connection diagram

Применимая схема для систем регистрации №1



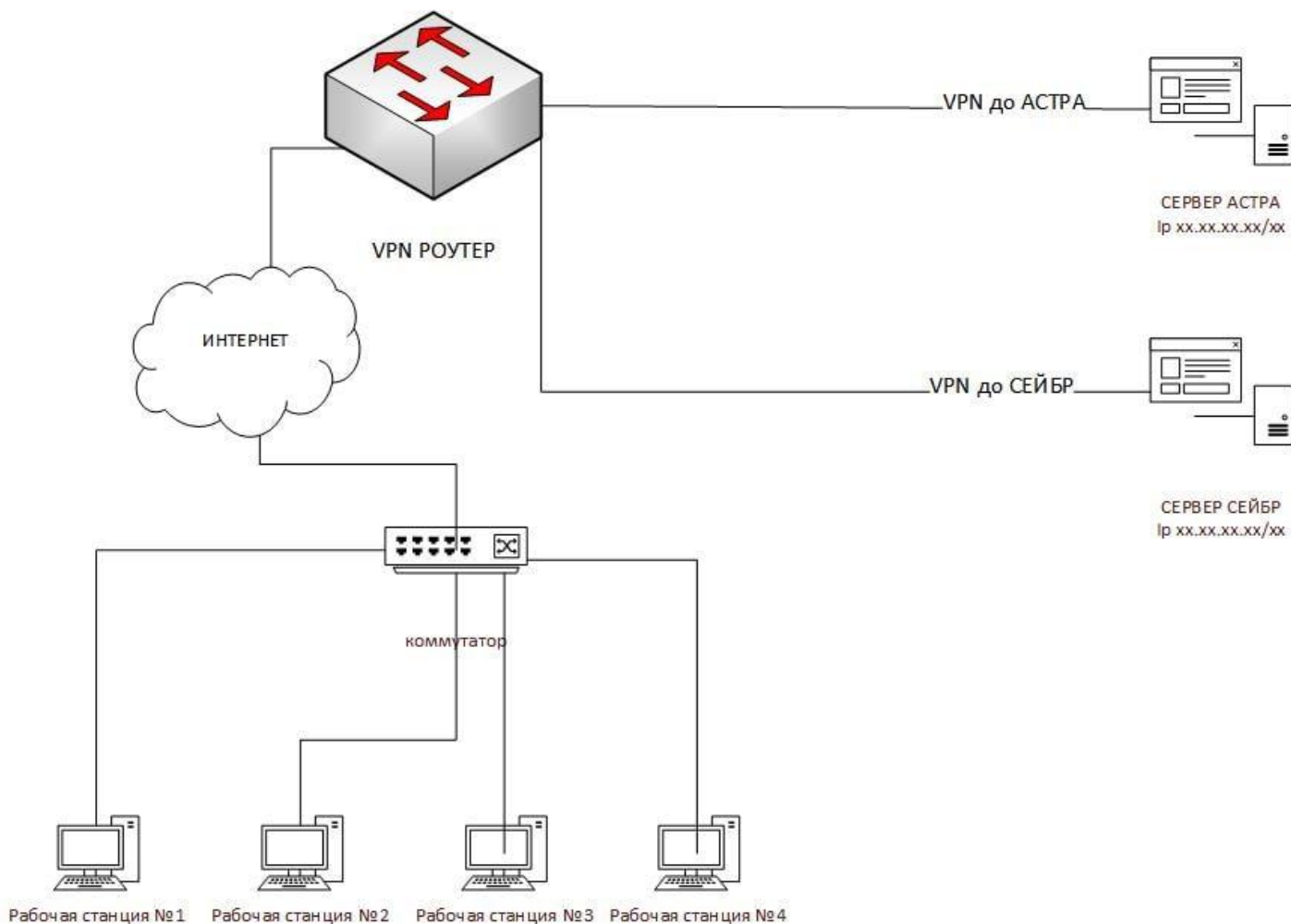
Необходимо добавить данные маршруты на роутере АСТРА:
1. 10.10.10.0/24 через 10.10.11.1
2. Маршрут до сервера АСТРА

Необходимо добавить данные маршруты на роутере СЕЙБР:
1. 10.10.10.0/24 через 10.10.12.1
2. Маршрут до сервера АСТРА



Network connection diagram 2

Применимая схема для систем регистрации №2





Contacts

Zamar AG
CH-8049 Zurich, Switzerland
Limmattallstrasse 189
E-mail: info@zamar.aero
www.zamar.aero