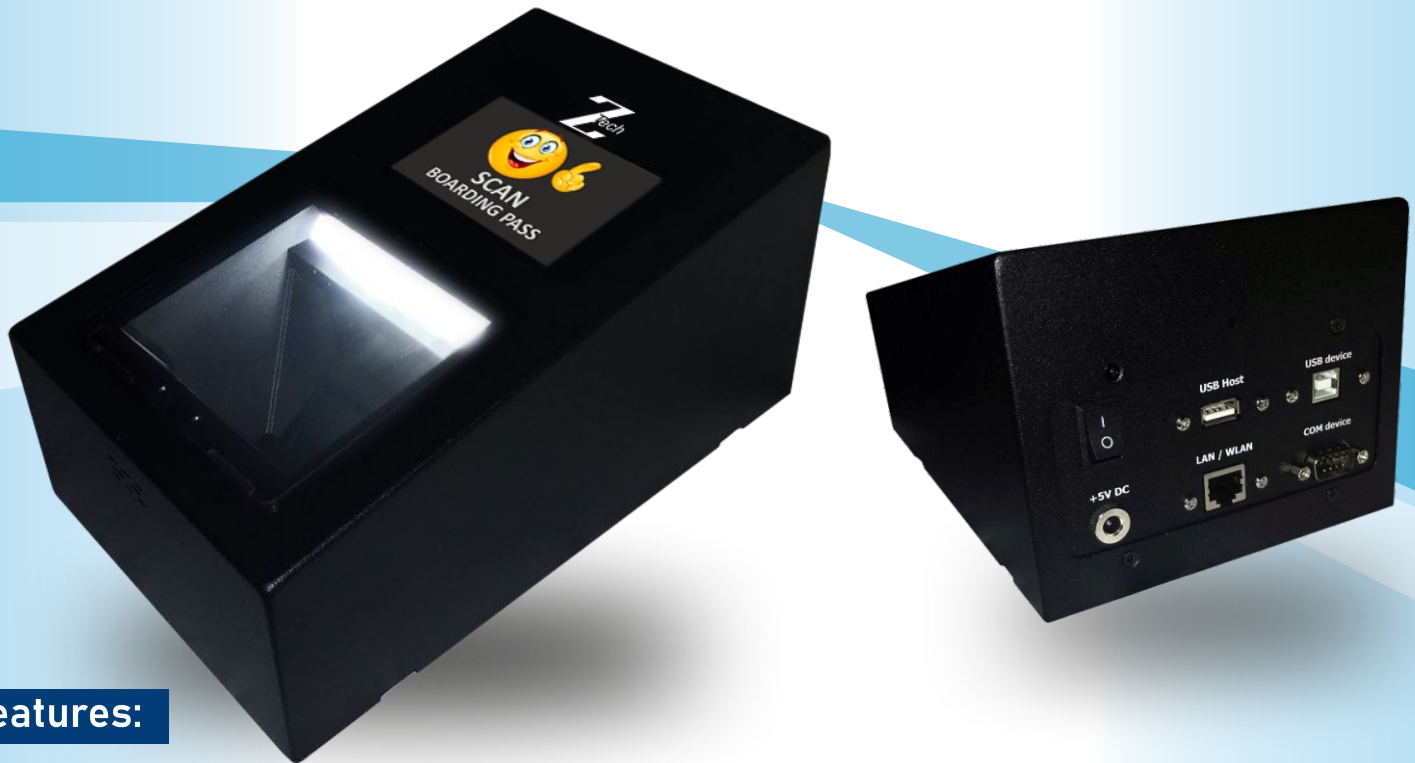


Boarding Pass Scanner ZT-01 BGR

ZT-01 BGR Boarding Gate Reader is a boarding pass scanner for airports and other transportation facilities that require ticket control.

ZT-01 BGR is used for data processing and interaction with the DCS of airlines when controlling the boarding of passengers on board the aircraft.

ZT-01 BGR is designed to scan 2D boarding pass codes from the screens of mobile devices and any paper media.



Features:

- Scanning and boarding control of standard paper boarding passes 1/2D codes
- Scanning and boarding control of electronic boarding passes from mobile devices' QR codes

Application field:

- Automated entrance to the Special Control Zone - PSG Pre-Security Gate
- Boarding Gate
- SBG Self Boarding Gate
- Check-in Desk
- HCC Hybrid Check-in Counter
- Self-service kiosks - CUSS/SBD



- Large barcode scanning window (compared to equivalents)
- Convenient and compact design that can be built into turnstiles or self-service kiosks
- high performance
- Automatic backlight adjustment
- Advanced technology for reading barcodes from mobile devices (E-ticket)
- Support for any type of 1D/2D barcode
- Color display
- Sound notification
- Compatibility with OC Astra/Linux, Windows, Android.
- Support for protocols up to AEA 2012 inclusive
- Compatibility with CUSS, CUTE/CUPPS
- Interfaces - Ethernet, USB host and Device, Serial interface

Protocols	up to AEA 2012
Supported 1D barcodes	UPC; EAN; Code128; Code 39; Code 93; Code11; Matrix 2 of 5; Interleaved 2 of 5; Codabar; MSI Plessey; GS1 DataBar; China Postal; Korean Postal
Supported 2D barcodes	IATA Resolution 792; PDF417; MicroPDF417; data matrix; Maxicode; QR code; MicroQR; Aztec; Hanxin
Scanning range	up to 220 mm
Scan speed	100 scans/sec
Scanner resolution	1280(h)x800(v)Px
Scan Angle	64°(h)x44°(v)
Barcode Sensitivity	Tilt ± 66° / Swivel 360° / Deviate ± 61°
Minimum Barcode Contrast	20%
Scan Range 5 MIL	0-50 mm
Scan Range 13 MIL	0-130 mm
Minimum scan resolution	4 MIL
Backlight	White 5000 K LED
Sound notification	Beeper Tone
Information display	3.5" IPS-LCD color display with 480x320 pixel resolution. 360° viewing angle for operator or passenger.
Interfaces	1x RS232, 1x USB host, 1x USB device, 1x Ethernet
Permissible humidity	5% ~ 95%
Operating temperature	-10°C ~ +50°C
Body	Metal, plastic insert with logo
Dimensions W x L x H	140 x 222 x 110 mm
Weight	1.8kg
Battery	External adapter 100-240 V, 5 VDC, 4A, 20W max
Guarantee	24 months

