

“Bokhtar International Airport” Reconstruction Project.

PAST



“Bokhtar International Airport” Reconstruction Project.

CURRENT

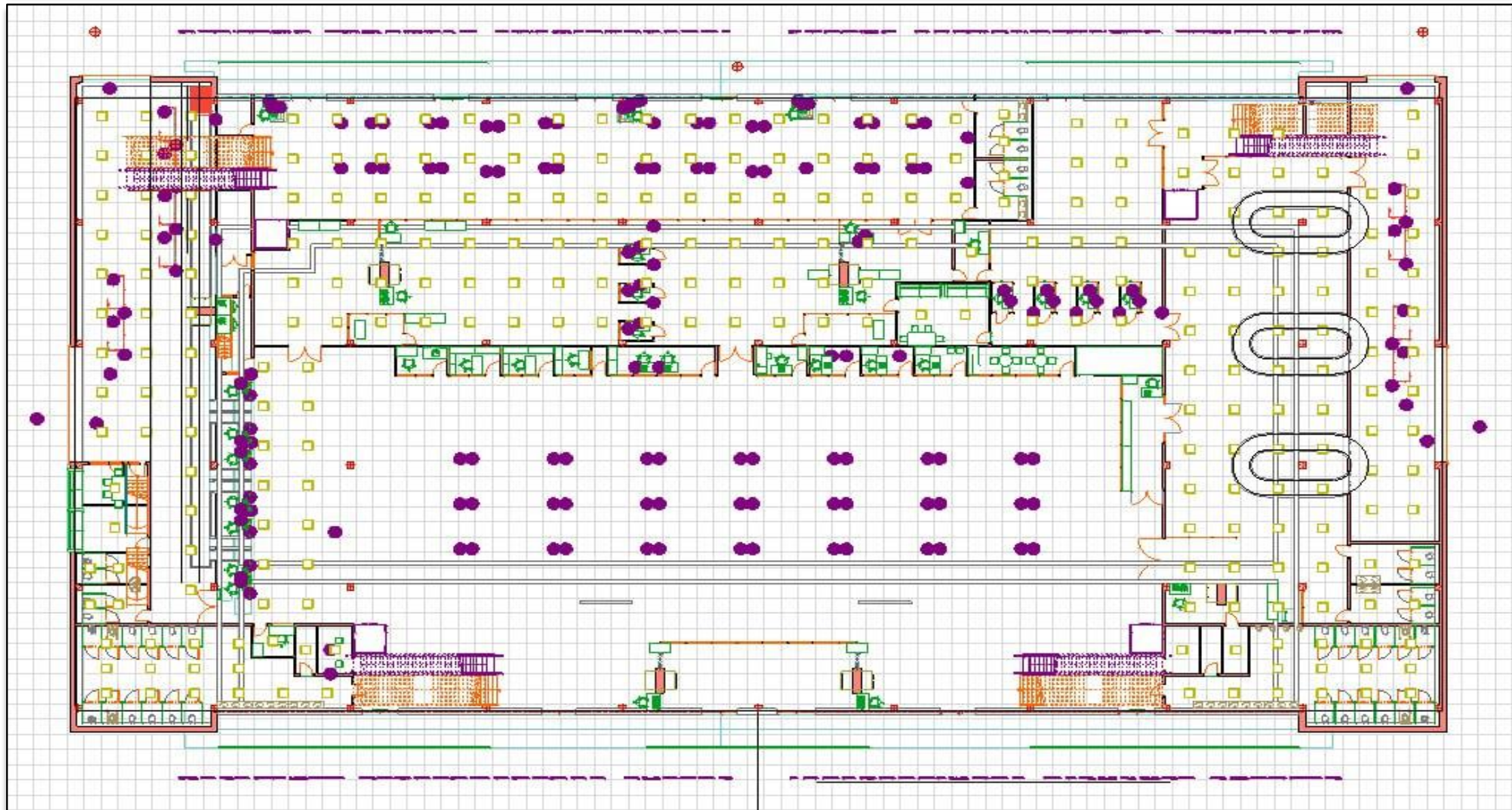


“Bokhtar International Airport” Reconstruction Project.

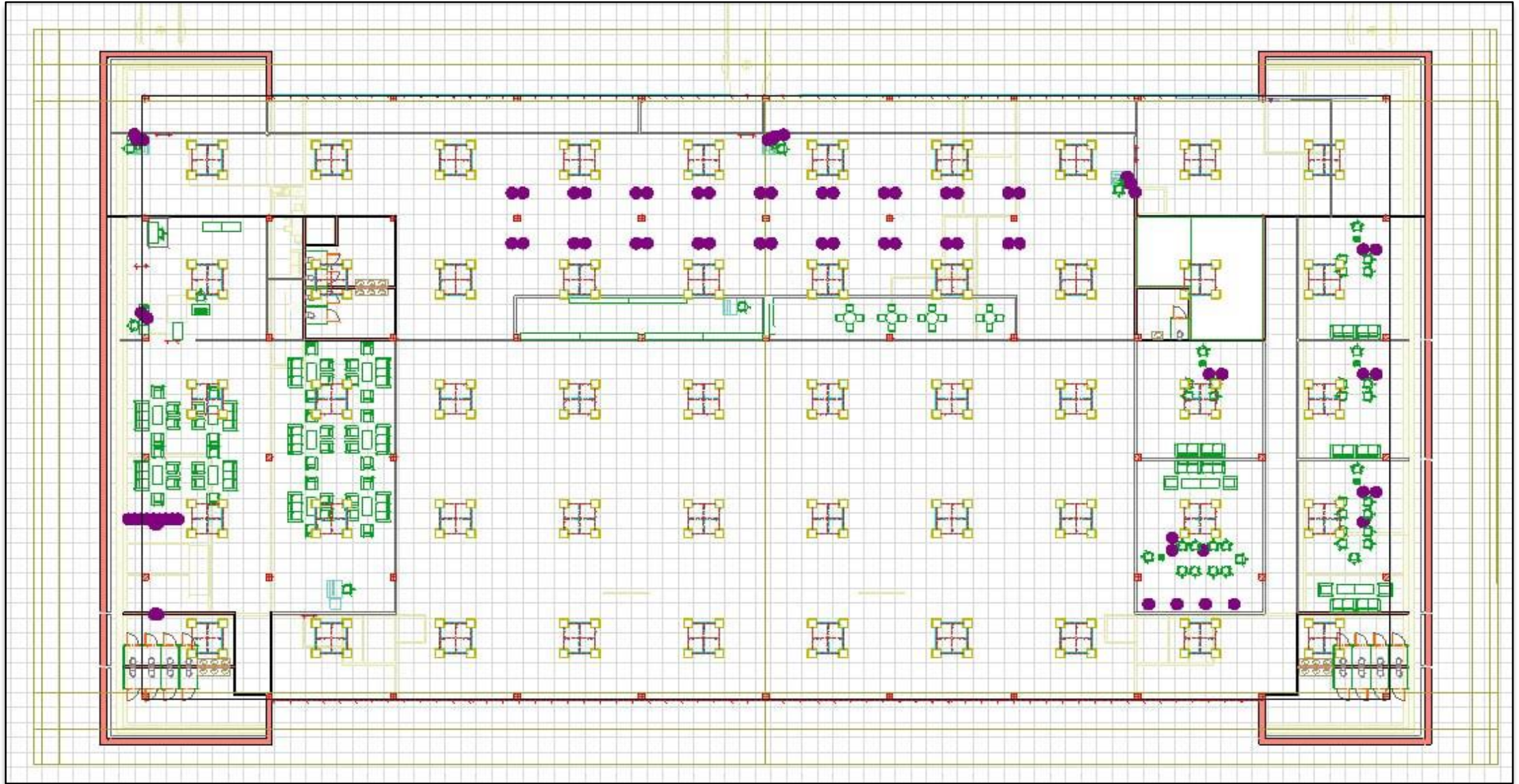
FUTURE



TERMINAL FIRST FLOOR PLAN



TERMINAL SECOND FLOOR PLAN



TERMINAL (Front side view)



TERMINAL (Perrone side view)

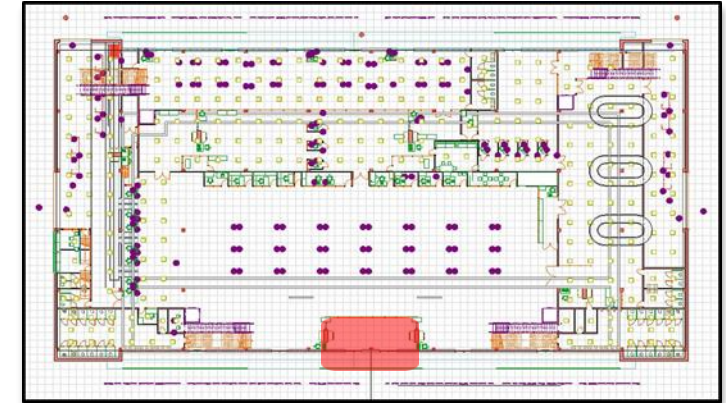


MAIN ENTRY



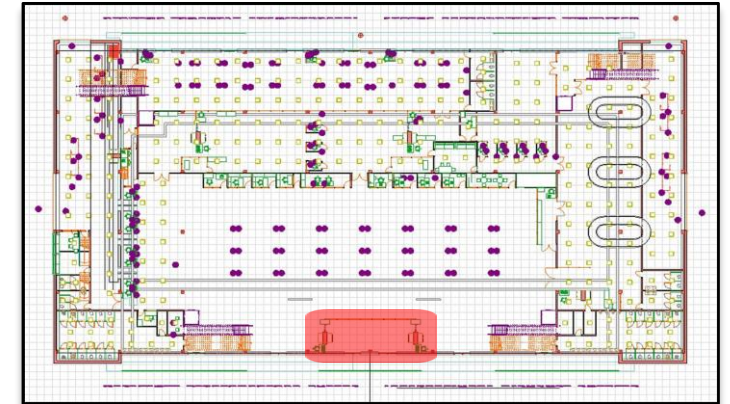
DEPARTURE

TERMINAL MAIN ENTRY



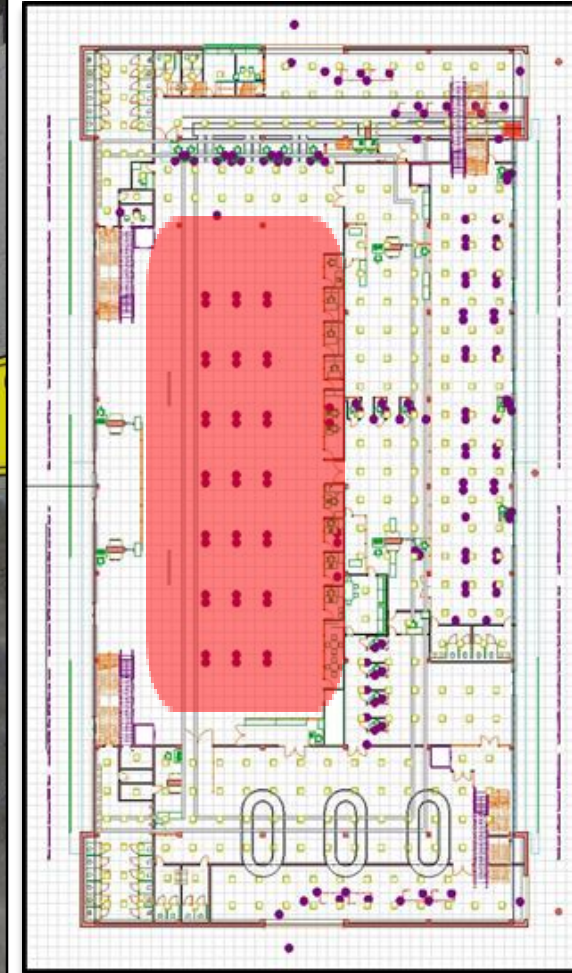
Comment

AIRPORT SECURITY- Entry to the terminal



At the entrance to the airport terminal there are two rapiskans. The second rapiskan serves as an additional one, in case of a breakdown of the first or a large flow of passengers. Rapiskan checks the baggage and the passengers themselves for the presence of prohibited items and substances. You need to double check. Already at the entrance to the terminal building, everyone is forced to put the bags on the tape, which delivers the luggage to the camera, which shines through the contents. This is the initial stage. Then, after check-in for the flight, to go to the departure area, everyone undergoes a second check, more detailed, at the time of customs clearance.

TERMINAL - Common Area



FLIGHT INFORMATION DESK



CHECK-IN ZONE



There will be 7 check-in counters in the terminal. Check-in desk numbers can be found on the information board at the airport: they are assigned by flight number.

Counters from 2 to 7 will be used as check-in desks and self-registration desks for passengers.

Counter 1 is the counter for check-in of oversized luggage.

There is also a cash desk in the registration area for receiving payments.



СЕРВИС
ПАСАЖИРОВ

СAPOPHI KAYDOLGAN
HETGAJINLAR SAFAHI
OVERSIDE BAGGAGE

01
АЙТАЛАН
Departure
16:00

02
АЙТАЛАН
Departure
16:00

03
АЙТАЛАН
Departure
16:00

04
АЙТАЛАН
Departure
16:00

05
АЙТАЛАН
Departure
16:00

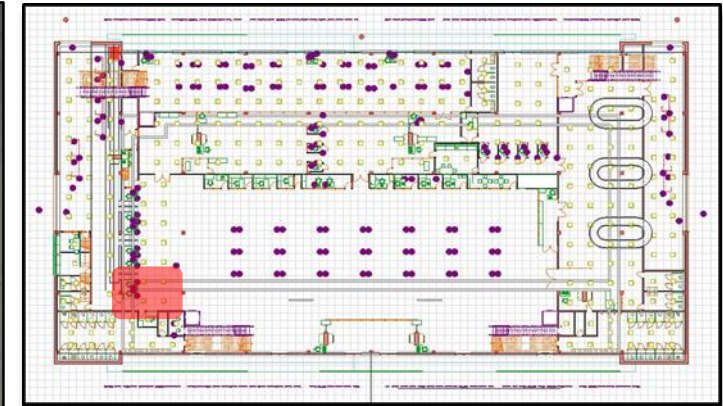
06
АЙТАЛАН
Departure
16:00

07
АЙТАЛАН
Departure
16:00

НАЦИОНАЛЬНЫЕ АВИАЛИНИИ
МЕЖДУНАРОДНЫЕ РОЙСЫ
ВНЕПОЛЕТНОЙ ПЛОЩАДКИ

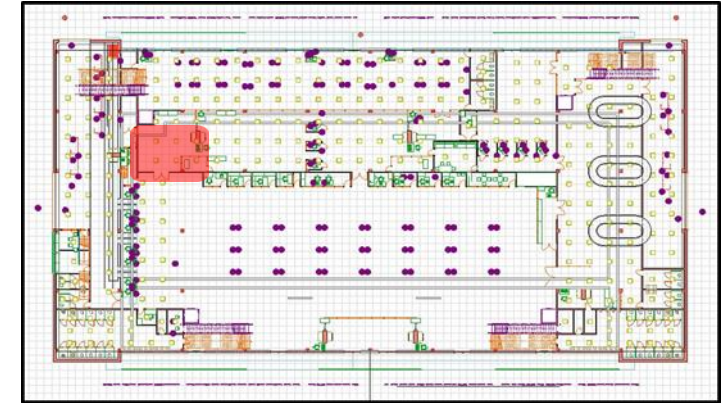
СAPOPHI KAYDOLGAN
HETGAJINLAR SAFAHI
OVERSIDE BAGGAGE

OVERSIZE BAGGAGE CHECK-IN DESK



There will be a separate counter at the airport, Counter 1 (a separate counter for oversized baggage) is a piece of baggage that exceeds the free allowance in size. Usually it is more than 158 cm in terms of the sum of length, width and height, in some airlines it is more than 203 cm.

ENTRY TO AIR SIDE



After passing the check-in, the passenger goes to the “ENTRY TO AIR SADE” for other procedures.

SECURITY ZONE - Departure



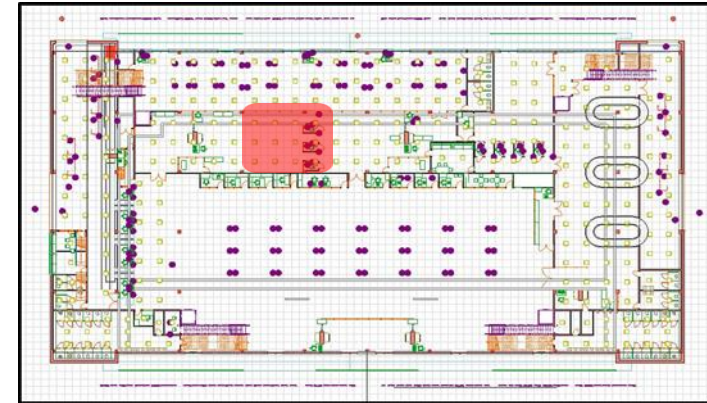
The airport security zone houses the airport customs service, the border service and security control.

CUSTOM SERVICE - Departure



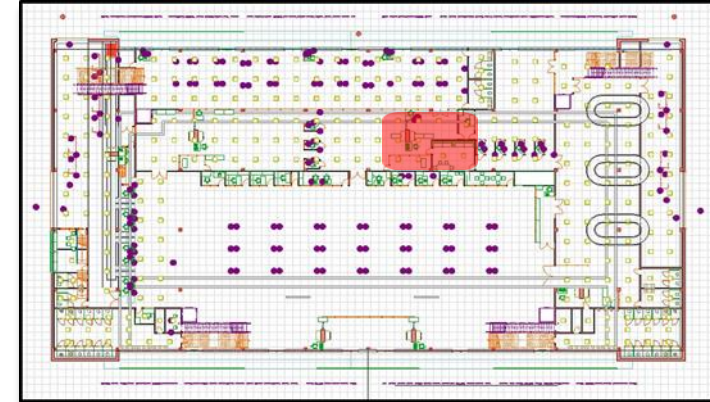
This is the area where the passenger goes through customs procedures. There is a rapiscan, a metal detector and a personal screening room for passengers.

BORDER SERVICE (Departure)



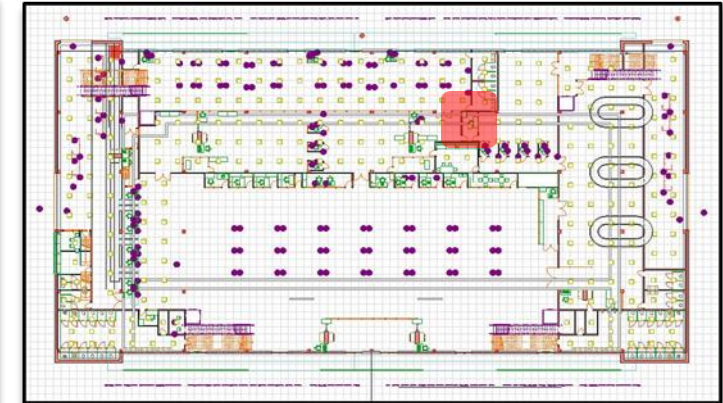
In the departure area of the terminal, there are 3 cabins for passing through passport control of passengers.

AIRPORT SECURITY SERVICE - Departure



This is the area where the passenger undergoes procedures for flight safety. There is a rapiscan, a metal detector and a personal screening room for passengers.

ENTRY TO BOARDING ZONE



After passing through the security zone, passengers proceed to the boarding area.

GATE ZONE (BUS)



Airport Gate or Clean Zone - a special area inside the airport, which is located after the customs and passport and personal control points by security officers and is intended only for air passengers, airport employees and airlines.

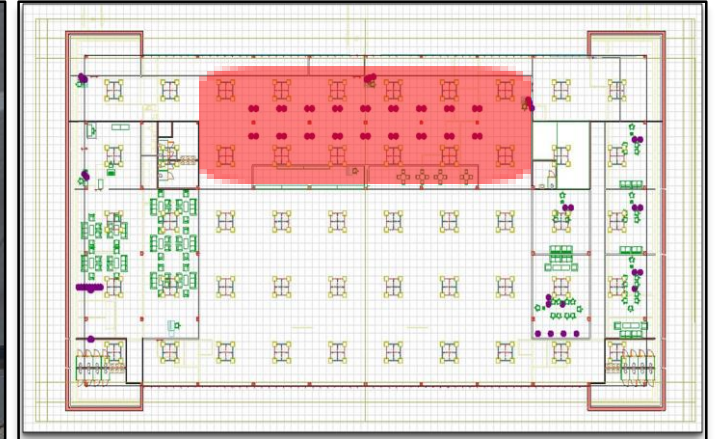
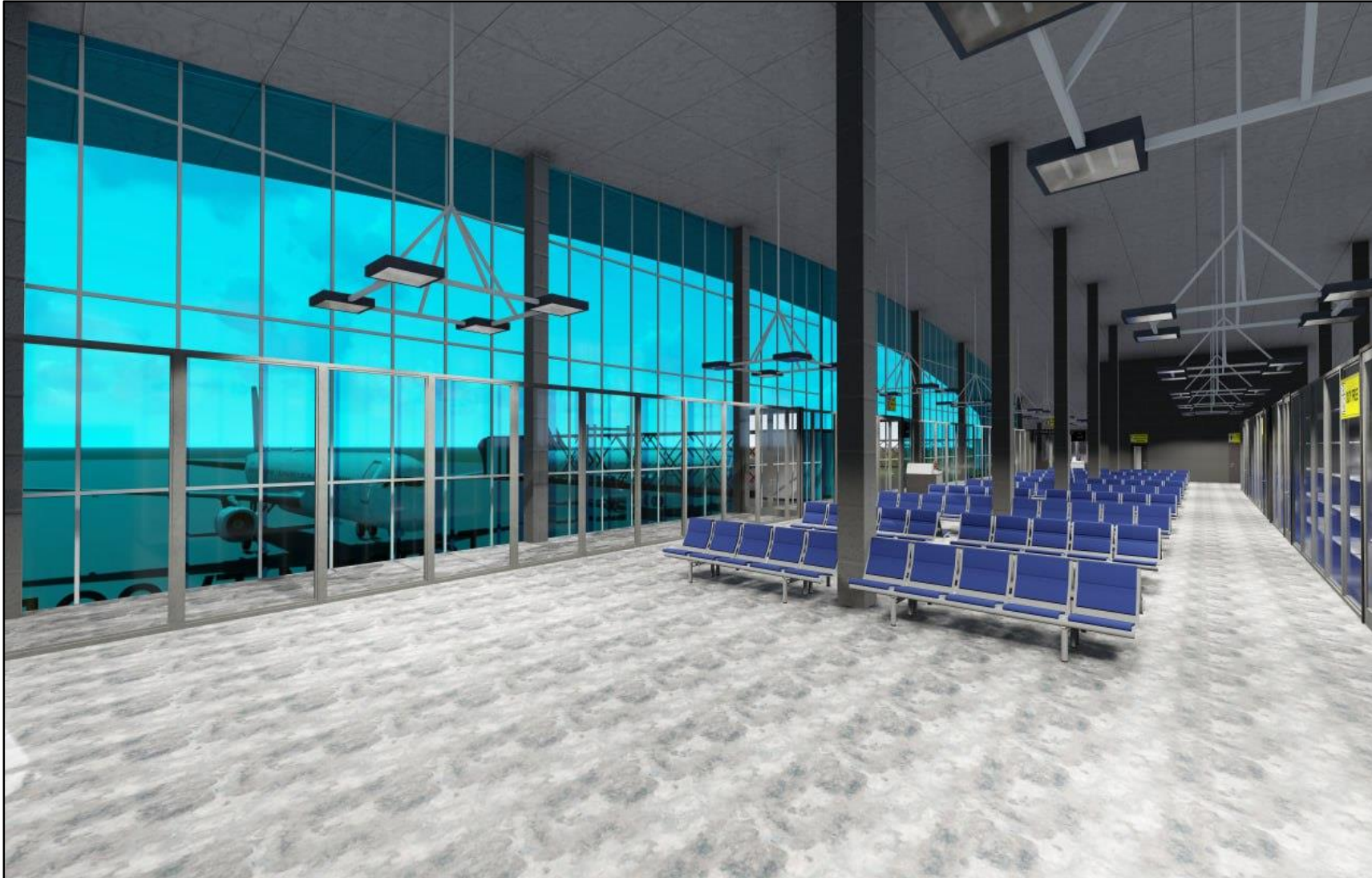
Terminal Gate Zone (BUS) - to transport passengers from the terminal to the aircraft by buses.

GATE (BUS)



There are three boarding gates in the passenger boarding area of the airport terminal.

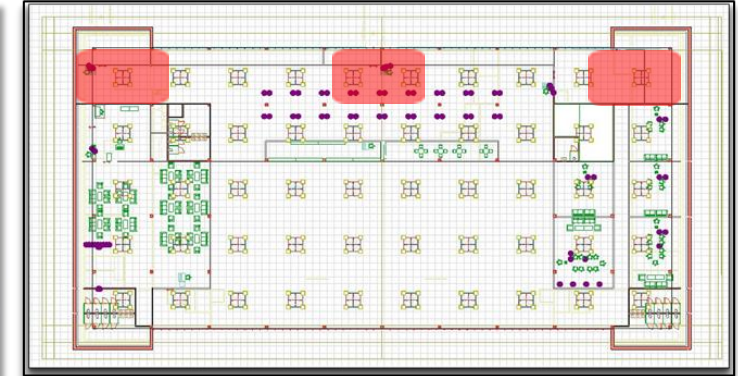
GATE ZONE - TELETRAP



The airport has a zone for boarding an aircraft through a teletrap. It is located on the second floor of the terminal.

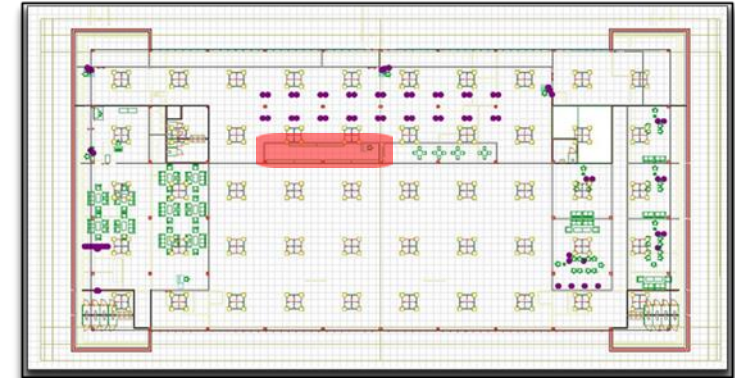
The second floor is directed by stairs, an escalator and an elevator.

GATE-TELETRAP



There are three boarding gates in the passenger boarding area of the airport terminal.

DUTY FREE



DUTY FREE - located on the second floor of the airport terminal in the boarding area via the teletrap.

CIP (Commercial Important Person)



The airport has a CIP HALL, to get there you must first go through the main entrance of the airport terminal.

CIP (Commercial Important Person)



Next, passengers need to go through the inspection of luggage and personal belongings in the security area of the airport.



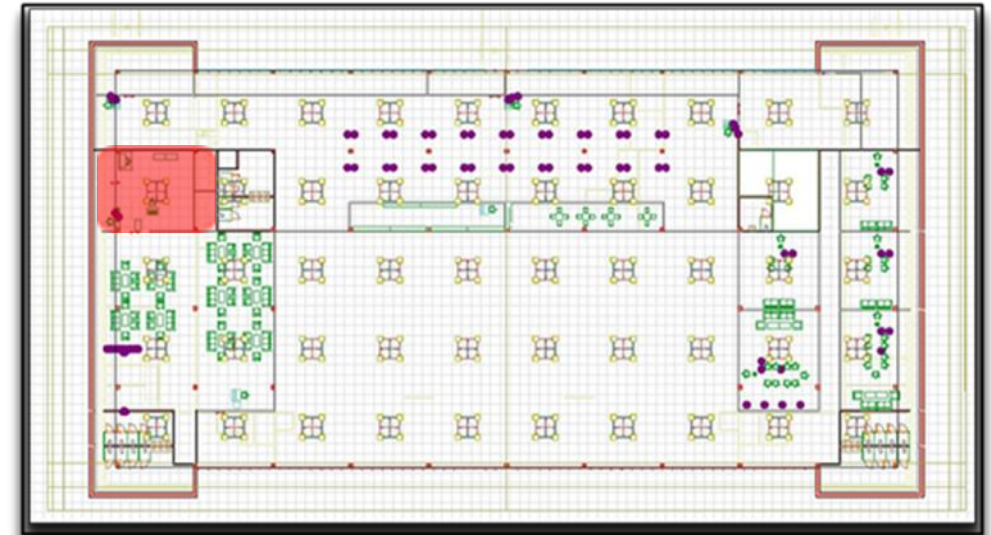
The CIP HALL is located on the second floor on the right side of the terminal, where the passenger can go through the stairs, escalator and elevator(lift).

CIP HALL



The CIP HALL has a passenger and baggage check-in desk, a seating area, toilets and a cafe.

CIP – SECURE AREA, CUSTOM, BORDER, EXIT



In CIP HALL there is a security area where the passenger passes customs control, a screening area and passport control.

Next is the boarding gate.

ARRIVAL

GATE BUS - ARRIVAL

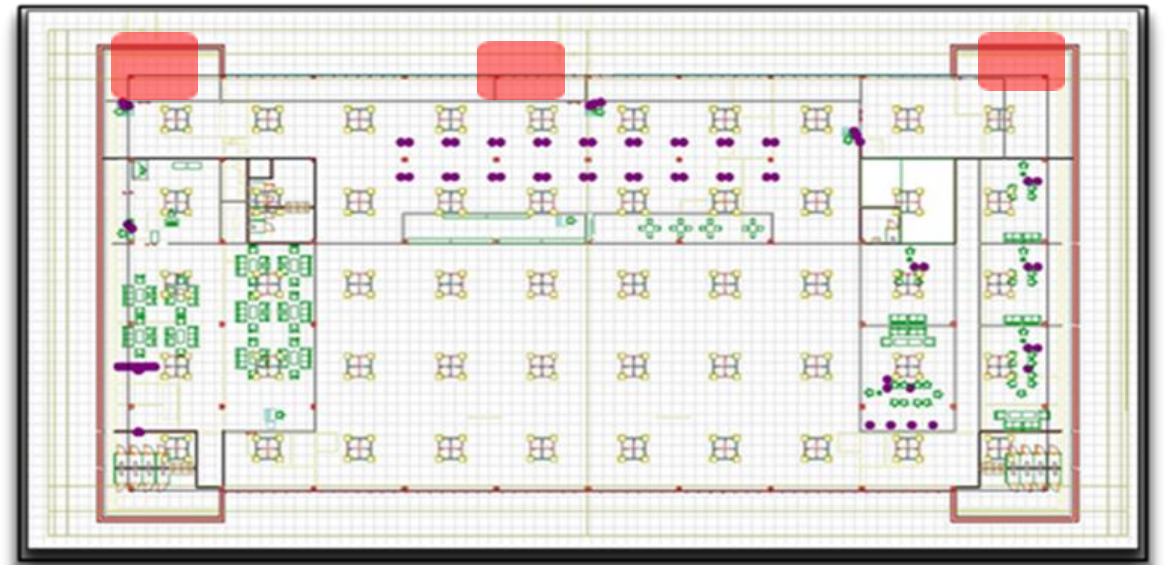
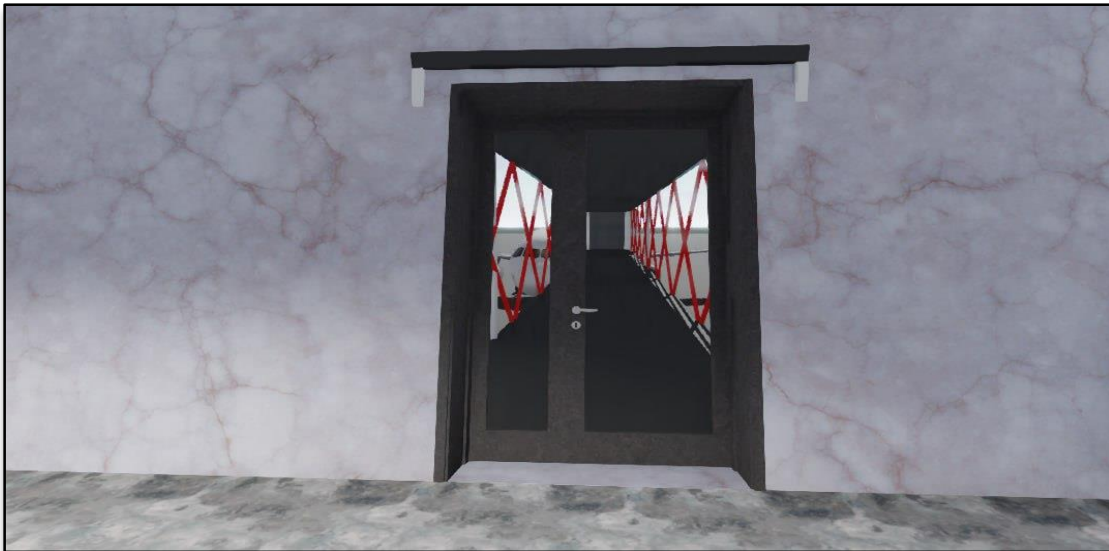


After arrival, passengers are taken by bus to GATE BUS ARRIVAL ENTRY.

GATE TELETRAP - ARRIVAL



Comment



BORDER SERVICE - ARRIVAL



In the arrival hall of international airlines, arriving passengers must first go through passport control.

The terminal has 4 passport control booths.

TRANSFER DESK - ARRIVAL



Arriving passengers who have a transit flight are sent to the transit counter, which is located in the transit area.

The transit area at the airport is part of the terminal for connecting flights. In the transit zone, passengers do not leave the airport security area and, as a rule, do not go through customs control.

The transit zone is an international territory, so the general laws of international law apply here.

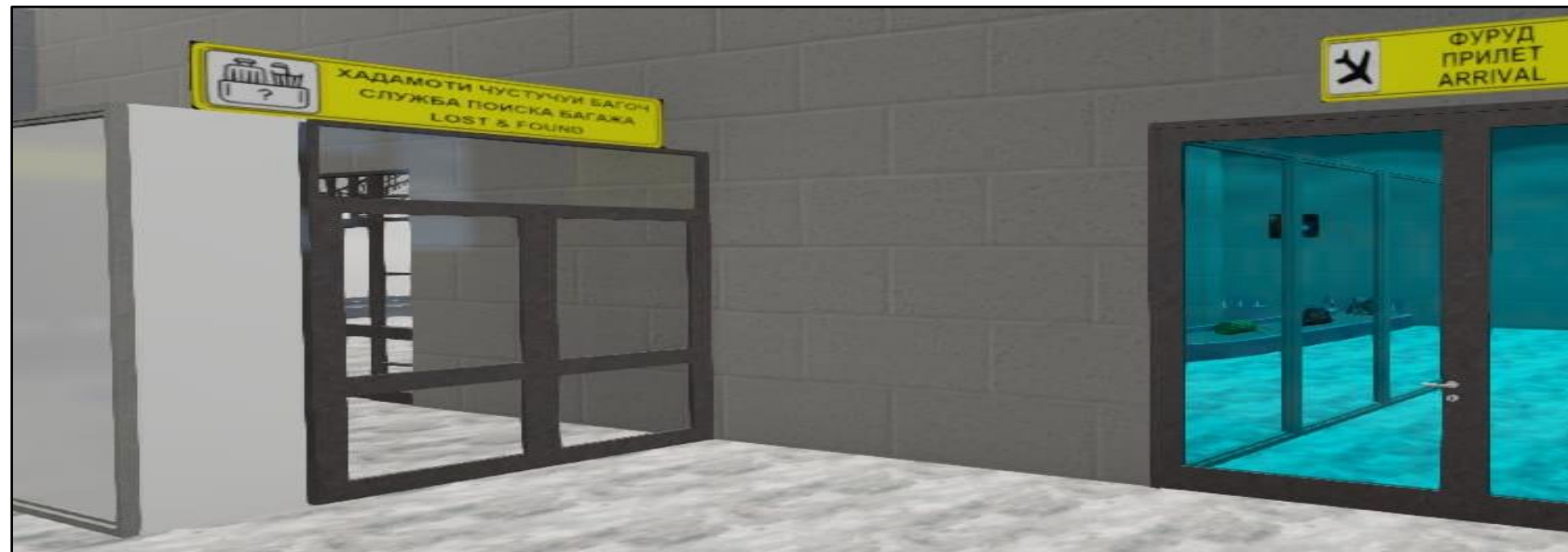
BAGGAGE CALM - ARRIVAL



After passing through border control, passengers will go to the baggage claim area, where they can pick up their luggage. As soon as it is uploaded to the tape, the flight number will appear on the information board or in the mobile application.

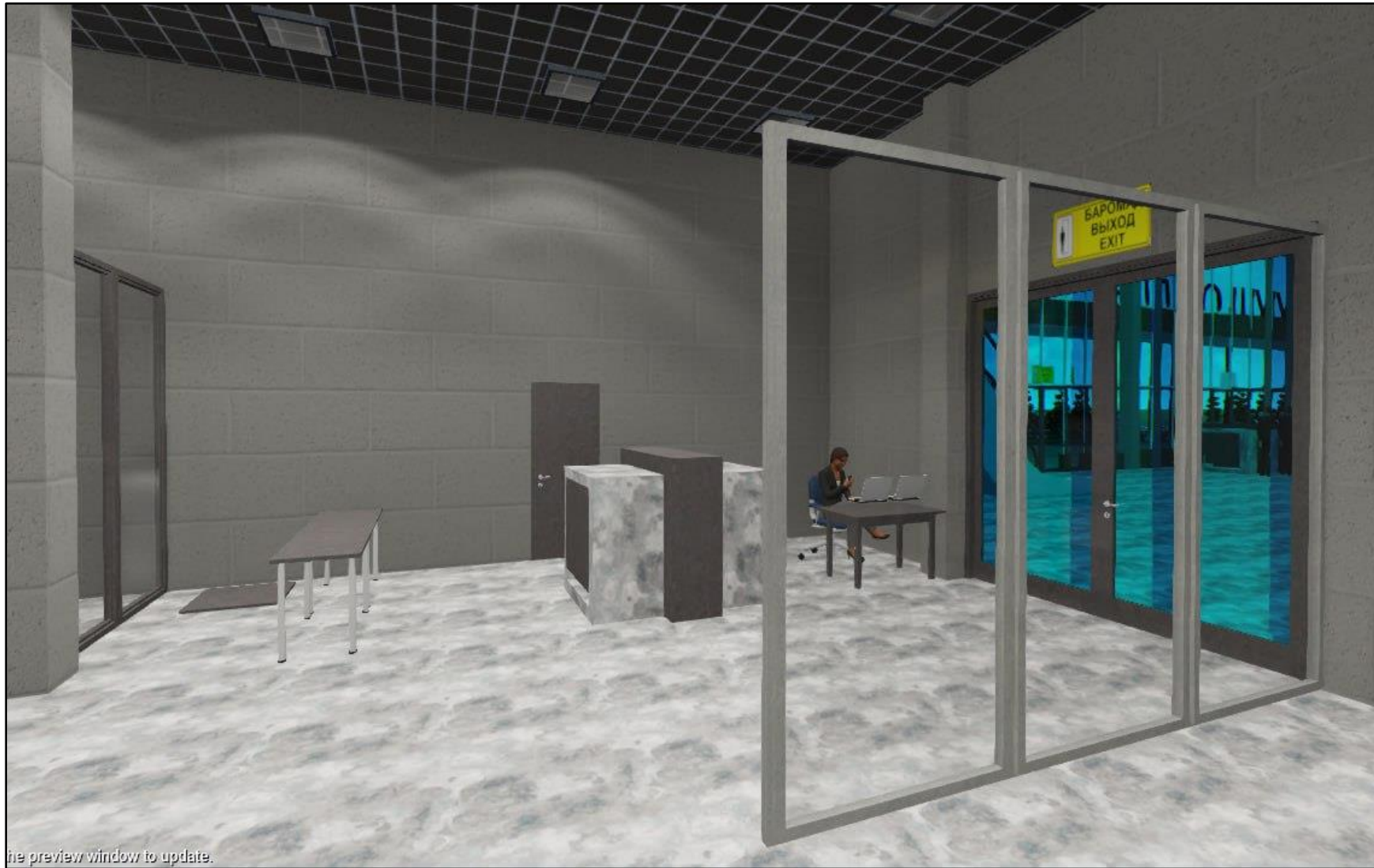
There are three baggage belts in the baggage claim area.

LOST & FOUND OFFICE



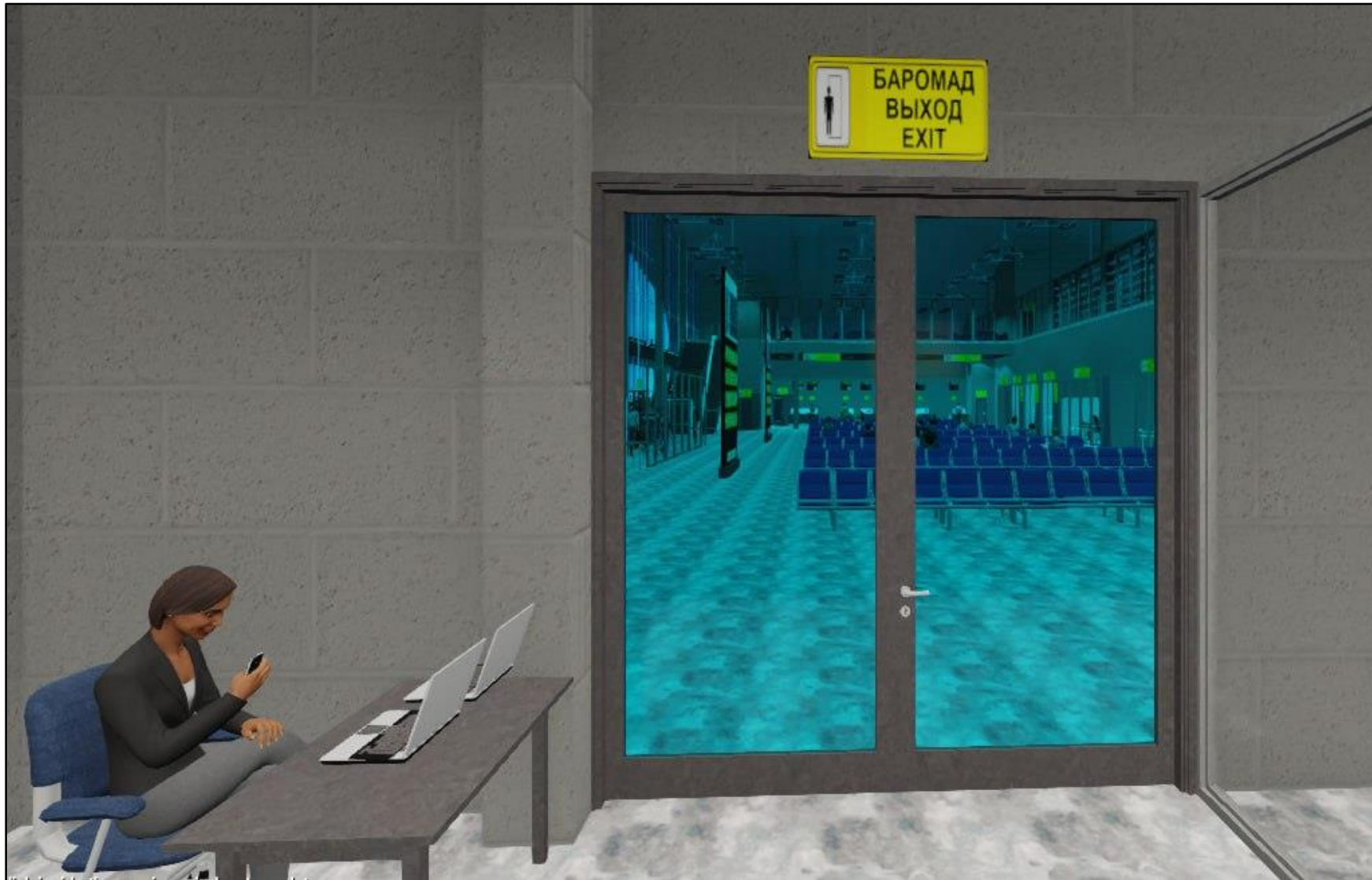
“Lost & found service office” located in the baggage claim area and also in the general hall of the terminal.

CUSTOM SERVICE - ARRIVAL



After receiving the baggage, the passengers go through customs control and go to the gate - Exit.

EXIT TO CITY



Gate exit

AUTHORITIES

BAGGAGE HANDLING SERVICE - DEPARTURE



BAGGAGE HANDLING SERVICE - ARRIVAL



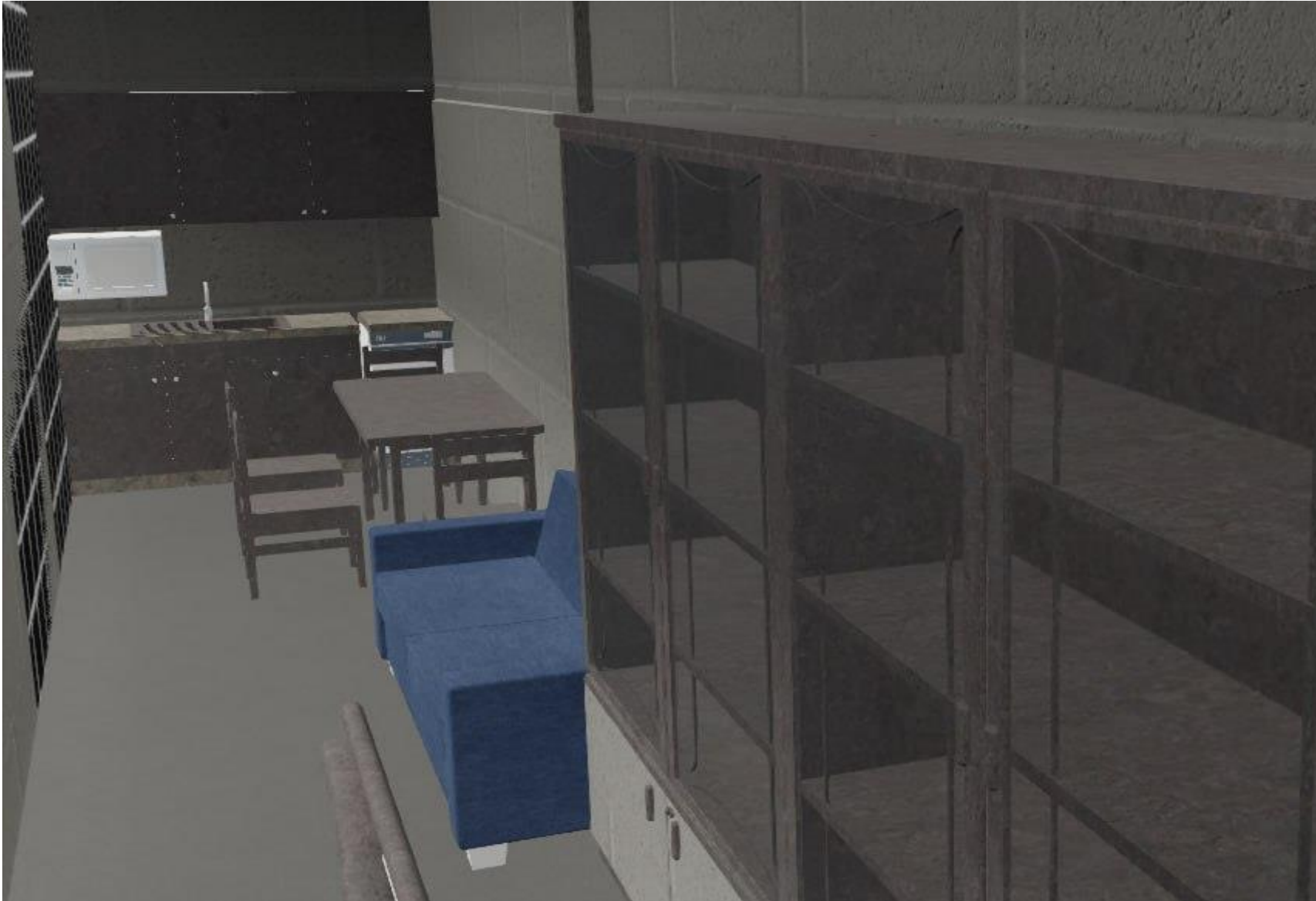
Place for unloading arriving baggage into the baggage carousel (Belt)

BAGGAGE CHECK ROOM



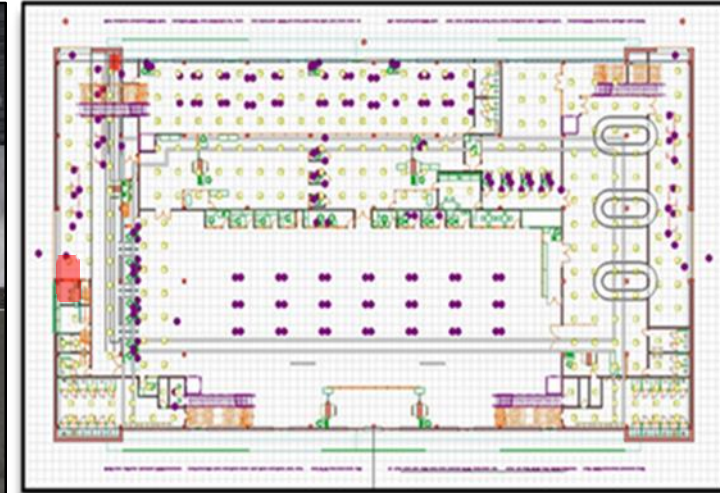
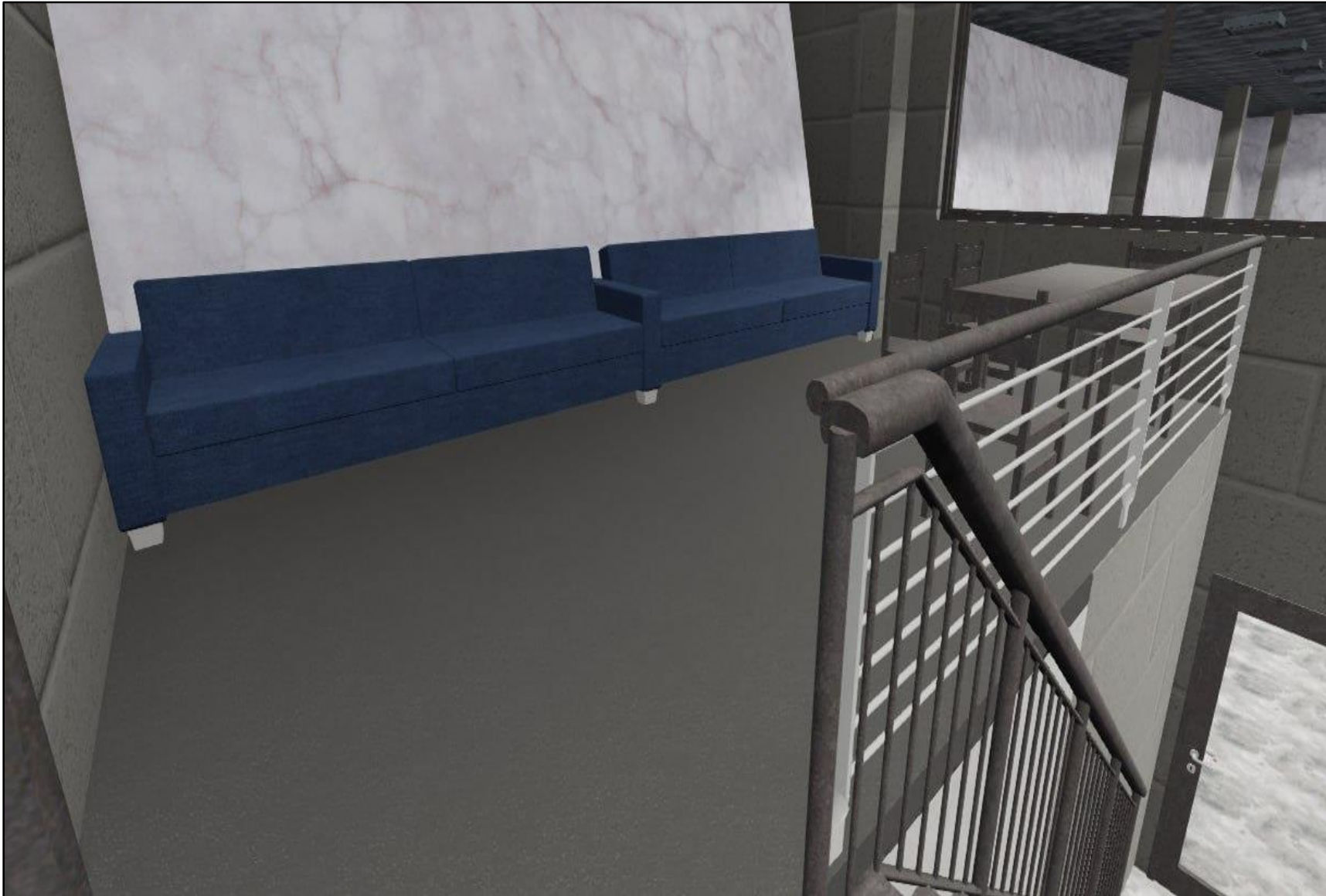
Room for baggage check room of passengers who have passed check-in. Baggage containing prohibited items is subject to manual screening. This is part of the flight safety of passengers.

CHECK-IN AGENTS REST ROOM



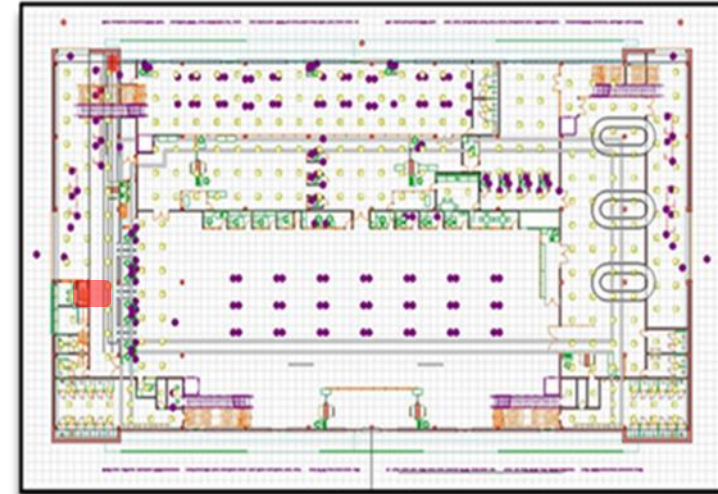
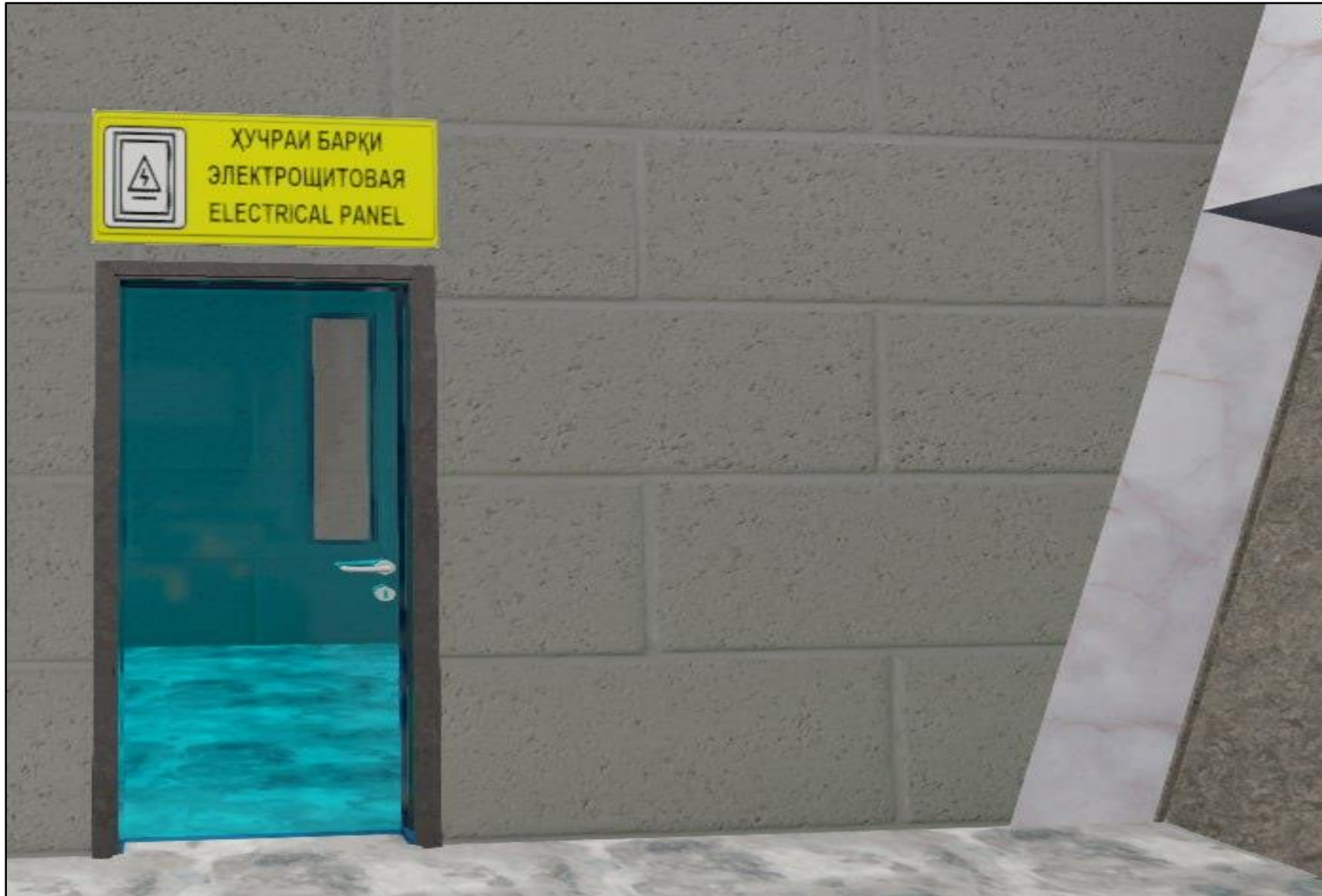
This is the place where agents rest and eat when they are free

BAGGAGE HANDLING STAFF REST ROOM



The rest room is the employees who are engaged in loading luggage into the aircraft and unloading luggage from the aircraft, as well as cargo and mail.

ELECTRICAL PANEL ROOM



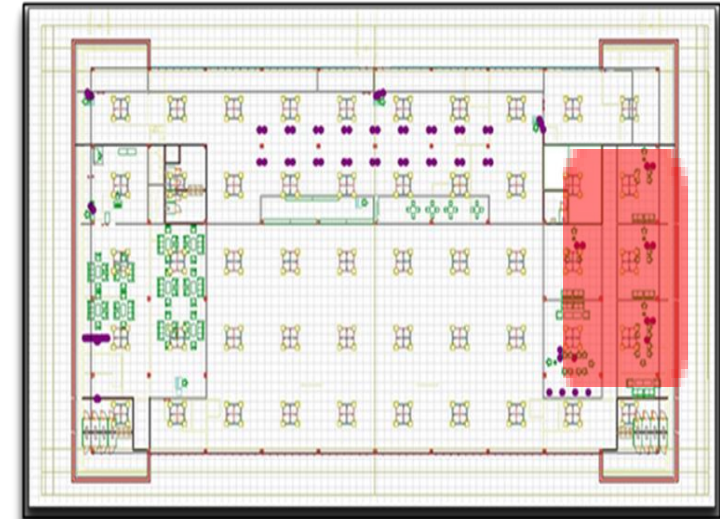
Electrical panel room - a room in which the electrical input and switchboard are located. It is a separate room, usually of a small area in a building, in which a switchboard or cabinet is installed. It is the starting point for the supply of electricity in this structure.

SERVER ROOM



A server room is a room occupied by large telecommunications and/or server equipment. The server room is a special-purpose room, connected to the outside world by redundant communication lines and is considered a terminal service facility designed to perform the telecommunication functions of the entire terminal.

OFFICES



Offices will be located on the second floor of the terminal.

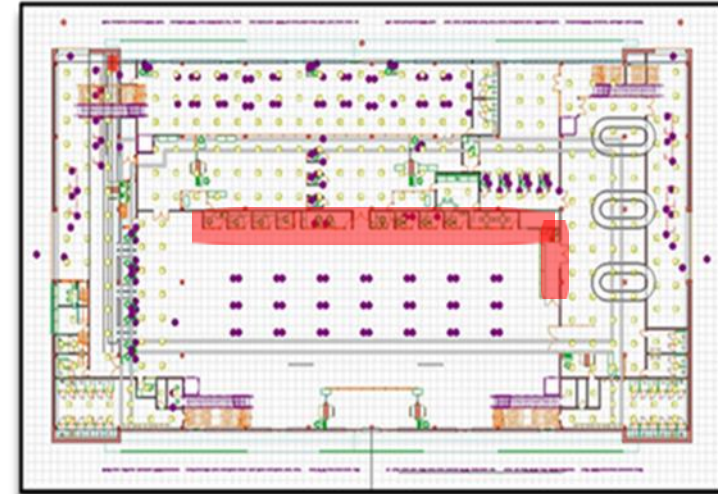
- Terminal authority
- Custom service
- Border
- Police
- Airport security

INFRASTRUCTURE

INFRASTRUCTURE



Click inside the preview window to update



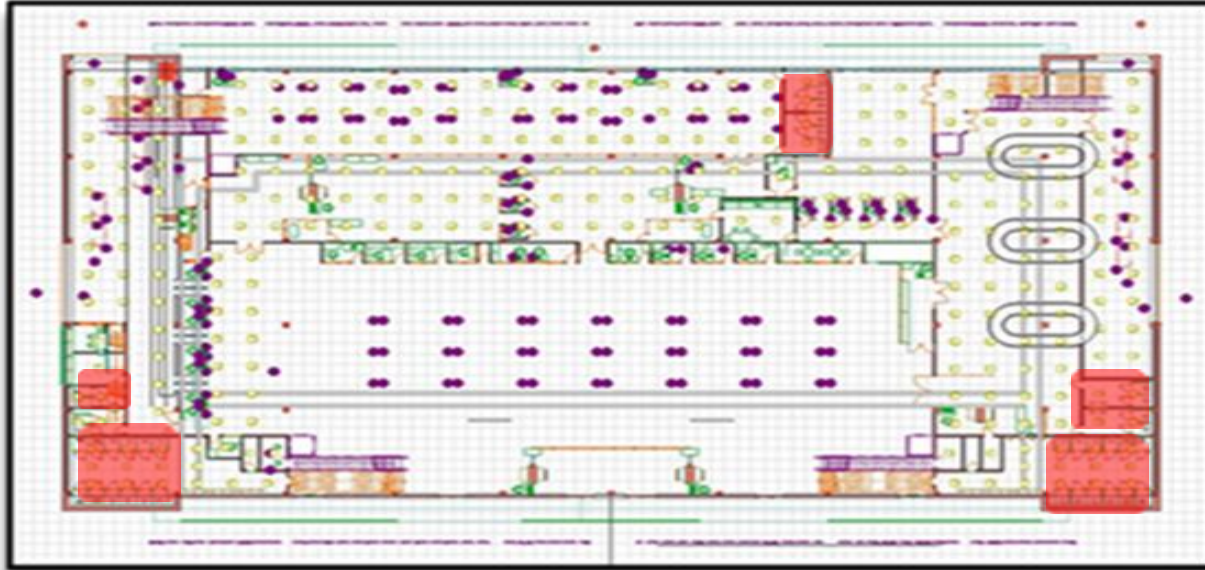
In the common hall of the terminal will be located.

- CAFE
- PRAYER ROOM
- BANK
- TRAVEL AGENCY
- MOBILE SERVICE
- MEDICAL CENTER
- INFORMATION DESK
- SHOP
- PHARMASY
- EXCHANGE OFFICE
- PHYTOSANITARY CONTROL
- LOST AND FOUND
- LUGGAGE STORAGE
- BABY CARE ROOM



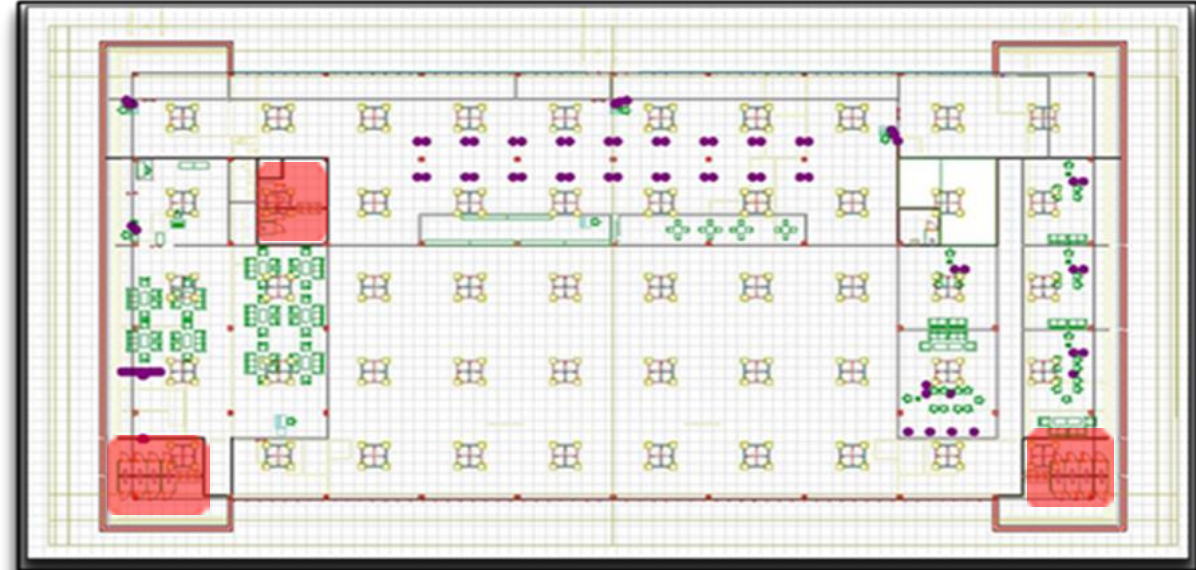
TOILETS

FIRST FLOOR PLAN



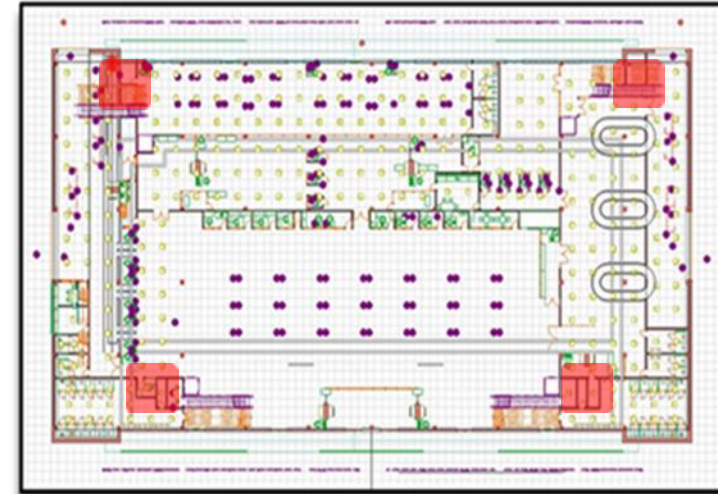
- Total 8 toilets on the first floor of the terminal
- Common hall - 2 toilets (male and female)
- For employees - 2 toilets (male and female)
- In Bas gate zone - 2 toilets (male and female)
- In Baggage claim zone - 2 toilets (male and female)

SECOND FLOOR PLAN



- Total 6 toilets on the second floor of the terminal
- Office zone - 2 toilets (male and female)
- CIP hall - 2 toilets (male and female)
- In teletrap gate zone - 2 toilets (male and female)

ELEVATOR / LIFT



The terminal has 4 elevators (lifts).

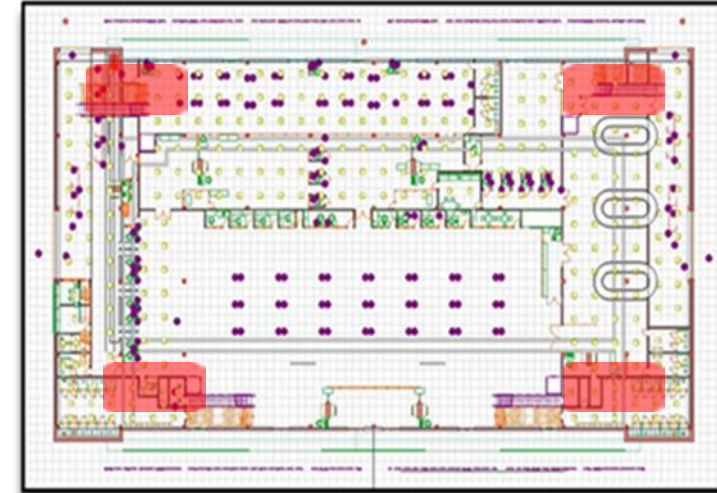
There are 2 elevators in the common hall.

- The first elevator - for lifting from the common hall to the CIP HALL and descending.
- The second elevator is for lifting to and from the airport terminal offices.

There are 2 elevators in the landing area of the terminal.

- The first and second elevators are for lifting from the first floor to the second and also for descending, that is, from BUS GATE to TELETRAP GATE and back.

ESCALATOR



The terminal has 4 escalators.

There are 2 escalators in the common hall.

- The first escalator - for lifting from the common hall to the CIP HALL and descending.
- The second escalator is for lifting to and from the airport terminal offices.

There are 2 escalators in the landing area of the terminal.

- The first and second escalators are for lifting from the first floor to the second and also for descending, that is, from BUS GATE to TELETRAP GATE and back.